

FLEXILINE Application - Quick and easy to apply



Flexiline application has been designed to be as quick and easy as possible. Permanent markings can be easily achieved by one person and a gas torch.

Ensure the surface is clean, dry and free from dust, dirt or debris. Layout Flexiline in the desired position and remove plastic file. Apply heat in a pendulum motion from the centre of the marking until it bubbles and bonds to the surface. For initial retro-reflectivity, glass beads can be applied to the line during heating. Allow to cool, if fast cooling is required water can be sprayed over to assist.

Tack coat, glass beads, gas torches and other associated equipment available.



Applications - Highway marking reinstatement, new markings, car parks, footpaths, cycleways, airports, offices and factories, corporate logos, ports, playgrounds and hard sports surfaces.

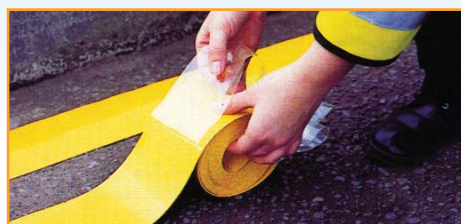
Application options

Self Application

Flexiline allows for the self application of product for projects.

Available in many colours and any shape, Promain can also offer assistance and advice for those who are competent to apply thermoplastic.

Methodologies, technical information and advice are available, please call 01462 421 333 for any enquiries about Flexiline and how it could help your project.



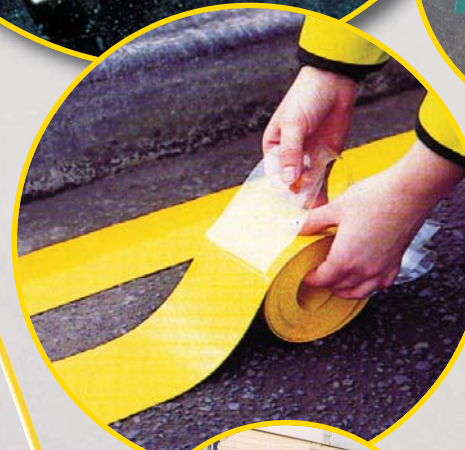
Road Safety Products

Wide range of road safety and lining products, speed ramps, verge posts and grit bins also available, please call us on Tel: 01462 421 333 to find out more.

Preformed Thermoplastic road markings

Flexiline

The flexible solution to road marking



QUICK AND EASY TO APPLY
STANDARD ROAD MARKINGS, TO
PERSONALISED LOGOS AND GRAPHICS
Flexiline provides all your requirements for hard wearing, quick and easily applied surface marking solutions.

With the performance of hot applied thermoplastic, these markings will last for years!

Contact PROMAIN today for
Technical Information,
assistance and advice

For more information call:
01462 421 333

Cycle logo



Preformed size
700mm
1200mm

Disabled logo



Preformed size
800mm
1400mm

Walking Man logo



Preformed size
980mm

Mother and child logo



Preformed size
1400mm

Arrows



Preformed size
2-6 metres

Letters & Numerals



Preformed size
300mm-2800mm

Flexiline is available in preformed lines, letters, numbers and symbols. It is one of the fastest ways to permanently reinstate road markings, providing excellent cost effectiveness, requiring only one person and a gas torch to apply.

Flexiline provides exceptionally clean cut, crisp markings that can be trafficked within minutes of application.

Extremely durable, Flexiline can be applied at any time of the year, even in cold conditions and is ideal for car parks, cycleways and playgrounds

- Wide range of colours
- Clean, crisp road markings in minutes
- White markings incorporate reflective glass beads. For immediate reflectivity apply further beads during heating
- Independently road tested in accordance to BSEN 1824, performance characterises to BSEN 1463
- Fully complies with the Road and Streetworks Act 1991 code of practice for reinstatement.



Flexiline preformed thermoplastic lines



Crossing triangles conforming to TSRGD

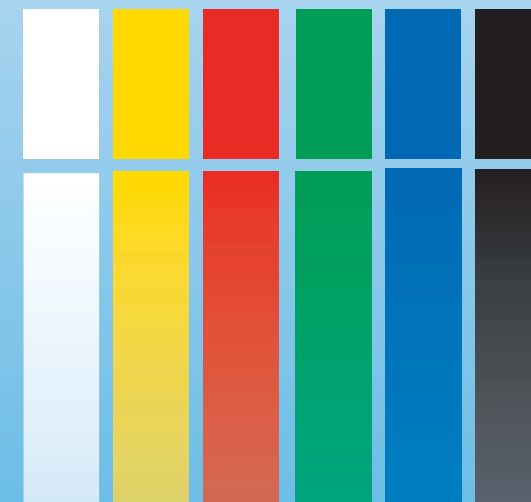
A small selection of logos available are represented please enquire for full range available.

Flexiline - perfect for playgrounds, tough enough to last for years



Ideal for producing playground games and shapes, to any design, any size

Available in the following standard colours



Corporate logos

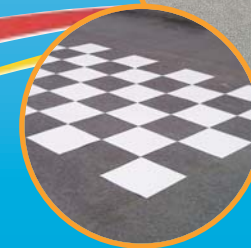
Prismo



Please note panels and photographs shown give an indication of colour, do not use for colour matching.



Promotes children's participation in active games and play



Did you know that 20% of a child's school days are spent in the playground

STANDARD GAMES KIT
We have put together a kit of the most popular playground markings.

- Kit includes:**
- Hopscotch 10 No - 30cm/40cm squares.
 - Clock 2m diameter.
 - Alphabet Jump 26 No. - 30 cm squares.
 - Circles 1-3metre diameter.
 - Snake 15 No. - 35cm sections.
 - Compass 3 metre diameter.
 - Set of shapes (square, Pentagon, Circle & triangle) 1metre x 1 metre overall.